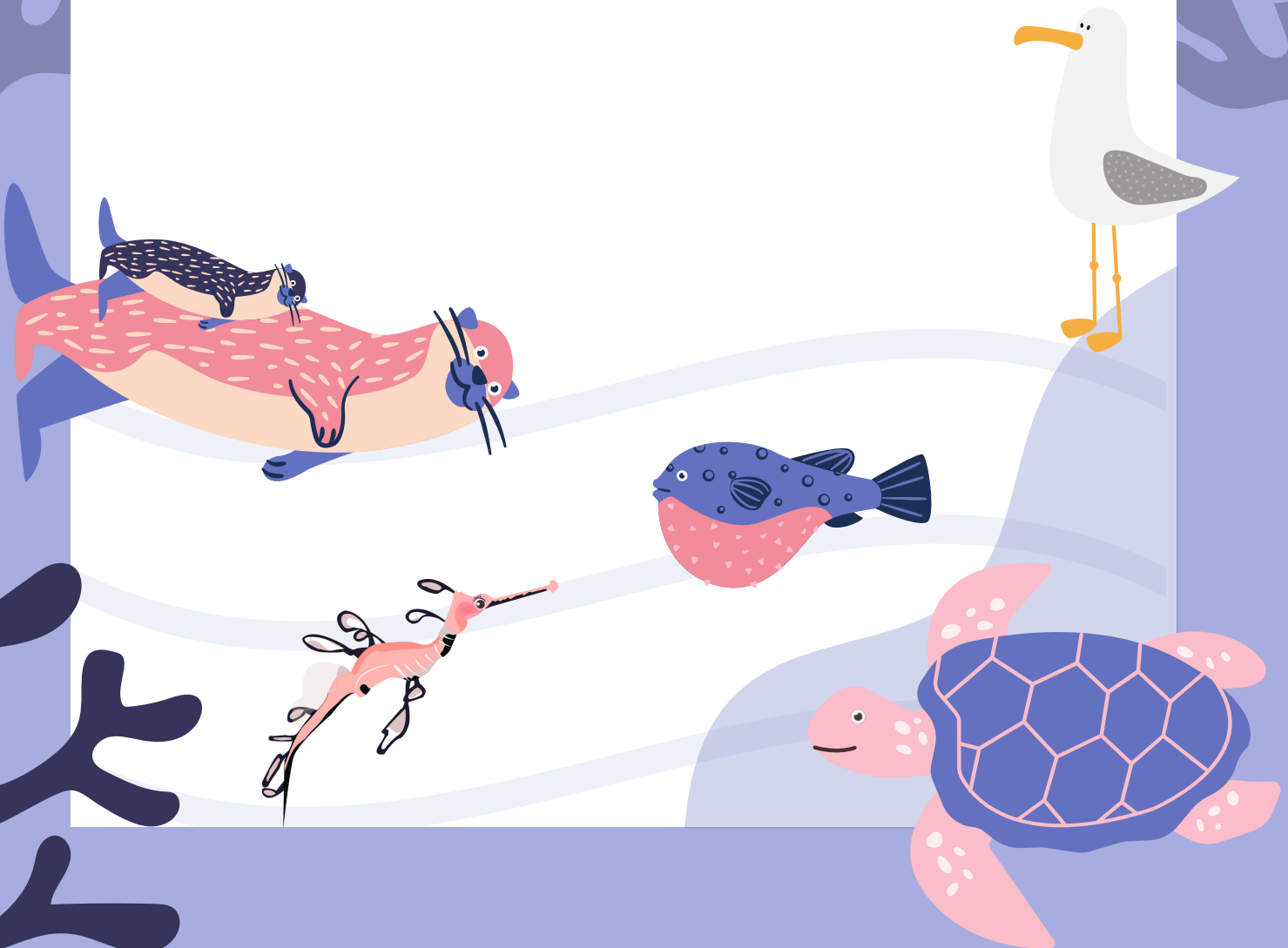


## Am I a Sea Dragon? Q&A Activity

We hope you enjoyed reading Am I a Sea Dragon? and meeting the characters in our story.

Am I A Sea Dragon? is a story that helps us to learn about Classification. Classification is how we group animals and plants. We can identify which group they belong to by looking at similarities and differences between the way they look and behave. This is how the Sea Dragon worked out they were a fish.

Here are some questions to answer to help us remember what we learnt in the story.



# Am I a Sea Dragon? Q&A Activity

## Questions

What habitat (home) does the sea dragon live in?

.....

Which animal was a mammal?

.....

Which animal was an amphibian?

.....

How do you identify a bird?

.....

.....

How do you identify a reptile?

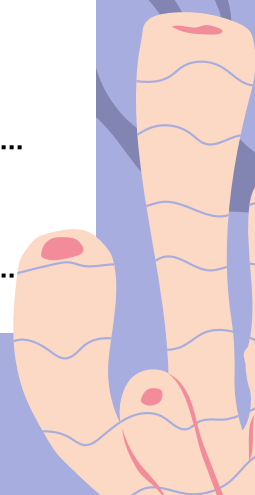
.....

.....

How did the Puffer fish know that the Sea Dragon was a fish? What body parts did the Sea Dragon have?

.....

.....



# Am I a Sea Dragon? Q&A Activity

## Answers

Here are the answers to the questions.

**What habitat (home) does the sea dragon live in?**

kelp Forest

**Which animal was a mammal?**

Otter

**Which animal was an amphibian?**

Frog

**How do you identify a bird?**

They lay eggs and have feathers and wings.

**How do you identify a reptile?**

They lay eggs on land, have scaly skin and use lungs to breathe.

**How did the Pufferfish know that the Sea Dragon was a fish? What body parts did the Sea Dragon have?**

The Sea Dragon had fins, gills and a tail, just like the pufferfish.